

# Correction to “A Pt(IV) Pro-drug Preferentially Targets Indoleamine-2,3-dioxygenase, Providing Enhanced Ovarian Cancer Immuno-Chemotherapy”

Samuel G. Awuah, Yao-Rong Zheng, Peter M. Bruno, Michael T. Hemann, and Stephen J. Lippard\*

*J. Am. Chem. Soc.* **2015**, *137*, 14854–14857. DOI: [10.1021/jacs.5b10182](https://doi.org/10.1021/jacs.5b10182)

## Supporting Information

The structure of 1-methyl-D-tryptophan and its analogs were inadvertently depicted in the L-configuration. The structures have been corrected from the L to the D isomers, and the corrected TOC, Figures 1 and 5, and SI are given here. These errors appear only in the figures; the main text and conclusions remain unchanged.

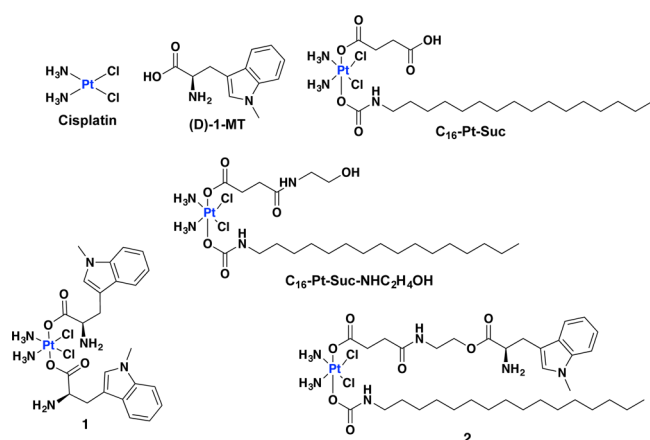


Figure 1. Structures of key compounds under investigation.

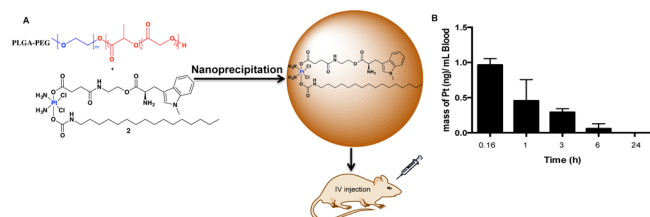
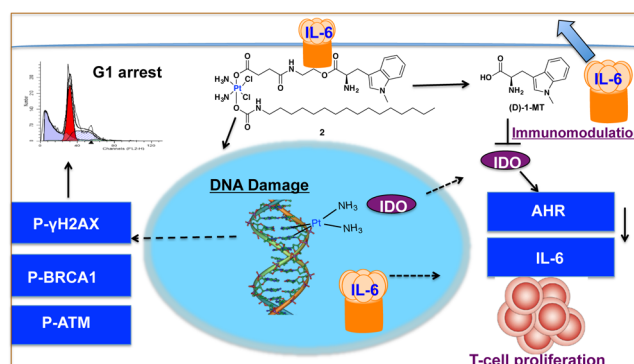


Figure 5. (A) Schematic representation of PLGA–PEG nanoparticles used to encapsulate 2. (B) Time-dependent stability of 2 in mice treated with 2-NP (8 mg/kg).

TOC:



## ASSOCIATED CONTENT

### Supporting Information

The Supporting Information is available free of charge on the ACS Publications website at DOI: [10.1021/jacs.6b01316](https://doi.org/10.1021/jacs.6b01316).

Experimental details, characterization of compounds 1 and 2, and data regarding all molecular biology, cellular, mice, and blood stability studies (with Scheme S1 and Figures S2–S9 corrected) (PDF)